



**AVK ASSIST**  
TAKE CONTROL OF YOUR  
CRITICAL ASSETS









# THE SMART WAY....

**AVK HAS A REPUTATION FOR BEING A LEADING INNOVATOR AND SOLUTIONS PROVIDER IN THE GLOBAL GAS AND WATER SECTORS. AVK ASSIST IS AN INNOVATION THAT CONTINUES TO DRIVE THIS REPUTATION.**

By building relationships with our partners, through listening and responding to both their key strategies and their daily operational challenges, we are able to develop solution led products and services which help deliver and resolve industry wide challenges.

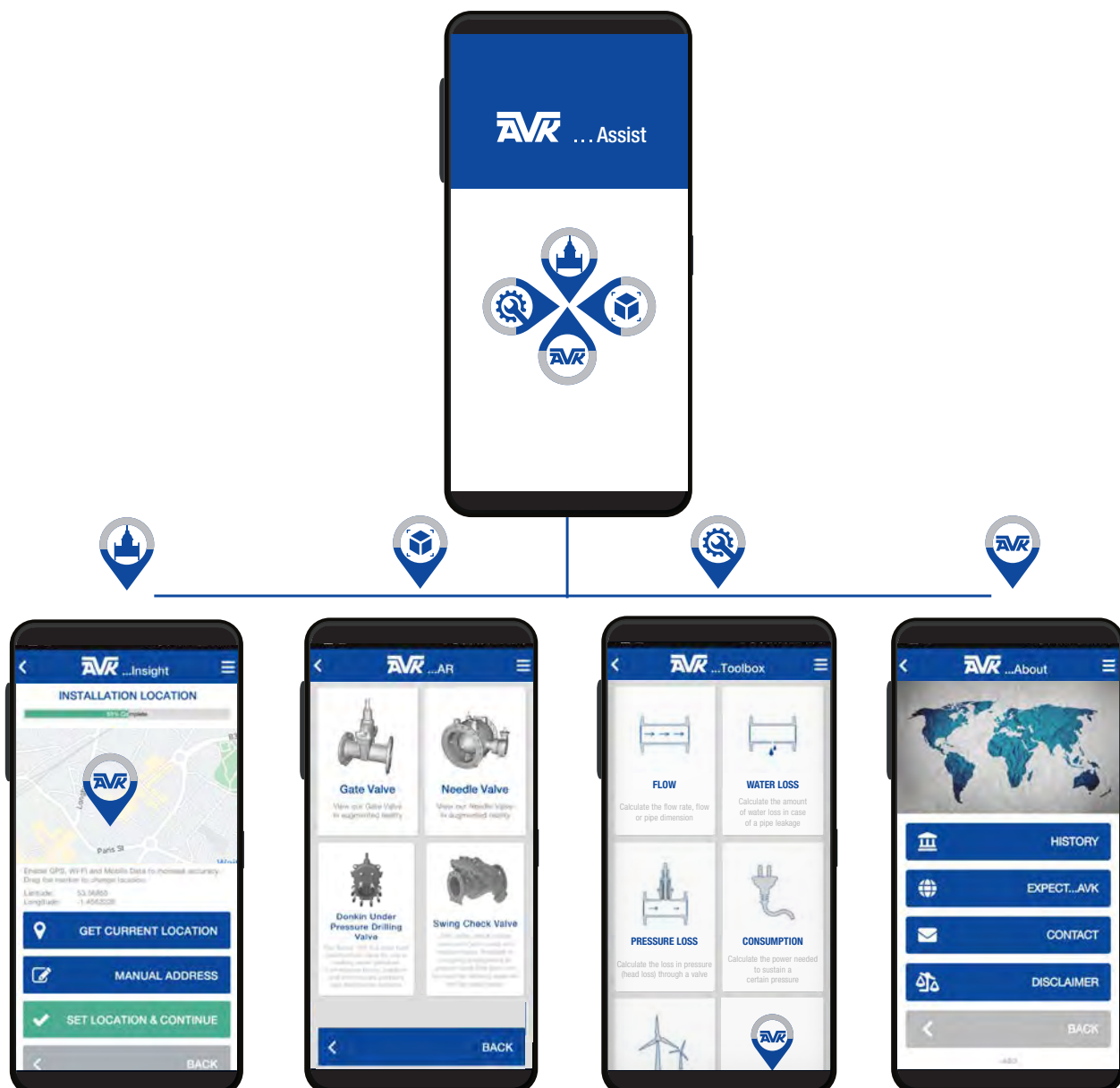
Network management and asset mapping are 2 key subjects highlighted in the majority of utility strategies as ongoing issues, the AVK ASSIST mobile app can make a major contribution on the journey to a resolution.

AVK ASSIST is a free app aimed at gas and water network engineers. The app is made up of 4 key elements which will help specify, select and then record the installation quality and GPS location of the asset.

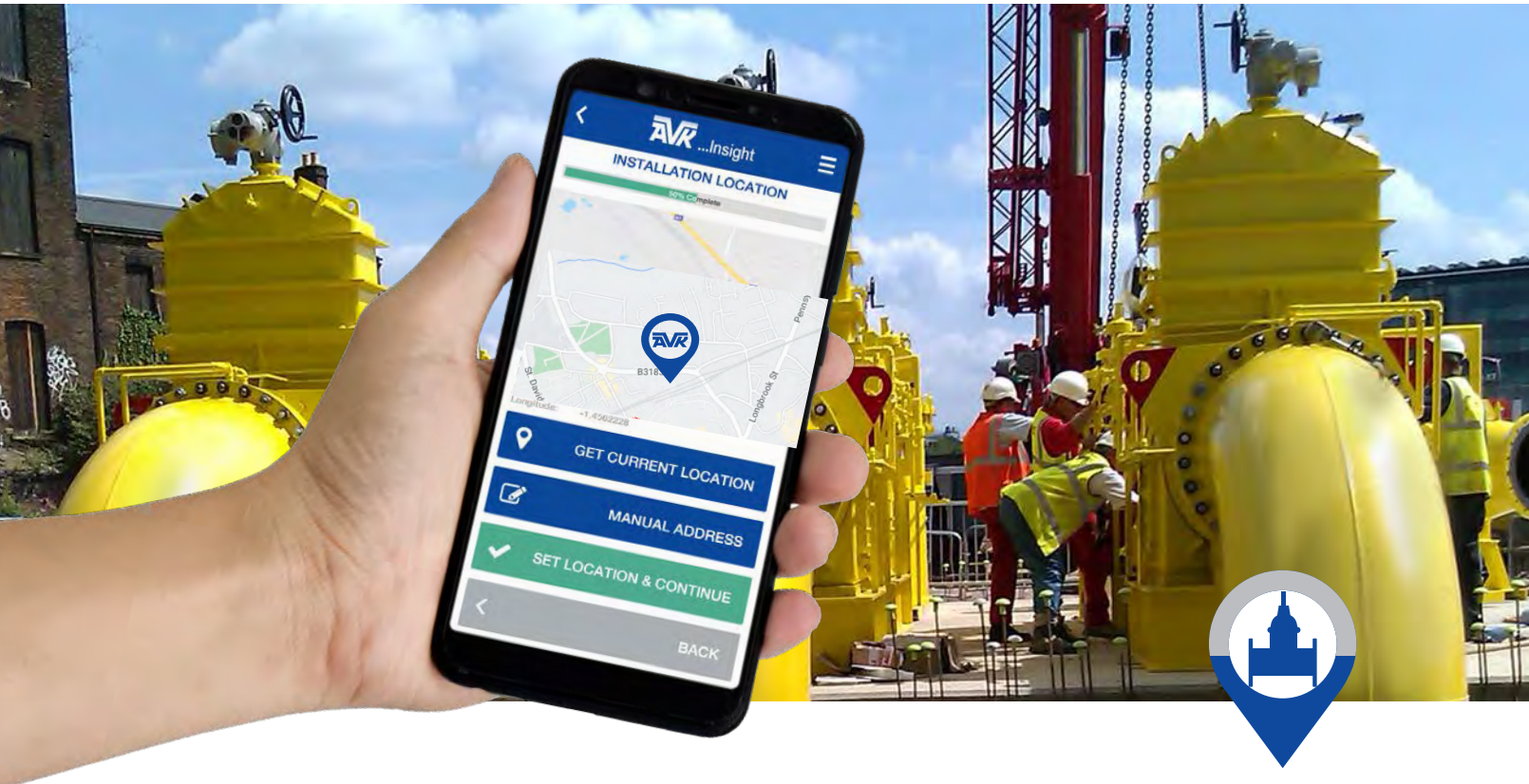
The AVK ASSIST app is available to download for free on the App Store and Google Play.



Apple and the Apple Logo are trademarks of Apple Inc.  
Google Play and the Google Play logo are trademarks of Google LLC.



# AVK INSIGHT



## AVK INSIGHT IS A COMPLETE ASSET MANAGEMENT SYSTEM

AVK Insight uses a QR code platform to enable full traceability of your assets.

Each installed valve has a unique GPS pin location. When combined with a photo of each installation, this provides a complete, accurate and auditable record of every valve you have installed.

All the captured data can be exported in formats that allow integration with existing mapping systems.



### FULL TRACEABILITY IN A FEW SIMPLE STEPS...

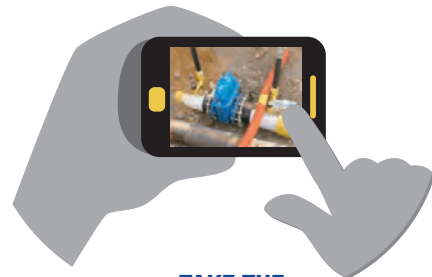
The valves QR code is generated after its has passed all tests and checks. The QR code links to the valve's full material and test record history. Once installed, you can trace the full journey of the vale from raw material to its installed location.



**SCAN THE QR CODE**



**SET LOCATION**



**TAKE THE INSTALLATION PICTURE**



## A COMPREHENSIVE MOBILE-FIRST, PAPERLESS SOLUTION FOR TRACKING ALL YOUR ASSETS.

- 

**INCREASED ASSET TRACEABILITY**
- 

**VISUALLY AUDIT THE INSTALLATION QUALITY**
- 

**RECORD INDIVIDUAL ASSET INSTALLATIONS**
- 

**EXPORTABLE DATA INTO STANDARD FORMATS**
- 

**ACCURATE GPS PIN LOCATION**
- 

**PERIODIC INSTALLATION AUDIT REPORT AVAILABLE**

### THE WEB PORTAL

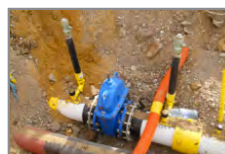
DATE	QR CODE	COMPANY	INSTALLER
6th Oct, 2014 [10:29am]	DEMO000001	AVK UK	Adam Tkacz
29th Sep, 2014 [11:23am]	DEMOVALVE2	Dierco Company	Dierco 1 Dierco 1
11th Sep, 2014 [14:24pm]	DEMOVALVE1	AVK	Bo Stubbler
11th Sep, 2014 [12:46pm]	TESTVALVE3	AVK UK	Adam Tkacz
5th Sep, 2014 [20:05pm]	TESTVALVE2	AVK UK	Adam Tkacz
4th Sep, 2014 [12:27pm]	TESTVALVE1	AVK	Bo Stubbler
2nd Sep, 2014 [16:51am]	DEMO000003	AVK UK	Adam Tkacz
2nd Sep, 2014 [13:10am]	TESTER	AVK UK	Adam Tkacz
2nd Sep, 2014 [10:16am]	DEMO000002	AVK UK	Adam Tkacz
2nd Sep, 2014 [10:09am]	DEMO000007	AVK UK	Adam Tkacz
2nd Sep, 2014 [10:05am]	DEMO000006	AVK UK	Adam Tkacz
1st Sep, 2014 [11:12am]	DEMO000005	AVK UK	Adam Tkacz
1st Sep, 2014 [11:11am]	DEMO000004	AVK UK	Adam Tkacz
1st Sep, 2014 [11:10am]	DEMO000003	AVK UK	Adam Tkacz
1st Sep, 2014 [11:10am]	DEMO000002	AVK UK	Adam Tkacz
1st Sep, 2014 [11:00am]	DEMO000001	AVK UK	Adam Tkacz



\* Secure customer login



Valve location mapped (colours indicate different pressure ratings)



Verify pictorial record

VALVE TYPE:	AVK 100
VALVE SIZE:	100mm
INSTALL DATE:	1st Sep 2014 11:00am
INSTALLER NAME:	Adam Tkacz
INSTALLATION ENGINEER:	Adam Tkacz
INSTALLATION PRESSURE:	10 bar
COMPRESSOR/PROTECTOR:	No
VALVE LOCATION:	100mm 100mm

Data record includes: valve type, materials, size, pressure and who installed the valve

\*Note: To access AVK Insight and the dedicated web portal an account needs to be created by our technical team. For new account requests please email [customerservice@avkuk.co.uk](mailto:customerservice@avkuk.co.uk) to set up your FREE AVK Insight account.

Note: Every effort has been made to ensure the information in this brochure is correct at the date of issue. AVK operates a policy of continuous product improvement and range extension and, therefore, reserves the right to modify product specifications in line with market requirements. For more information visit our website [www.avkuk.co.uk](http://www.avkuk.co.uk)





**USE AUGMENTED REALITY TO REALLY GET INSIDE OUR PRODUCT OFFER. AR AND 3D MODELLING IN GENERAL ARE BECOMING MORE AND MORE IMPORTANT WITHIN ALL FIELDS OF ENGINEERING**



### PRODUCT FAMILIARISATION

Using completely manipulatable models is fundamental to product understanding and therefore can assist in the decision making and specification processes.

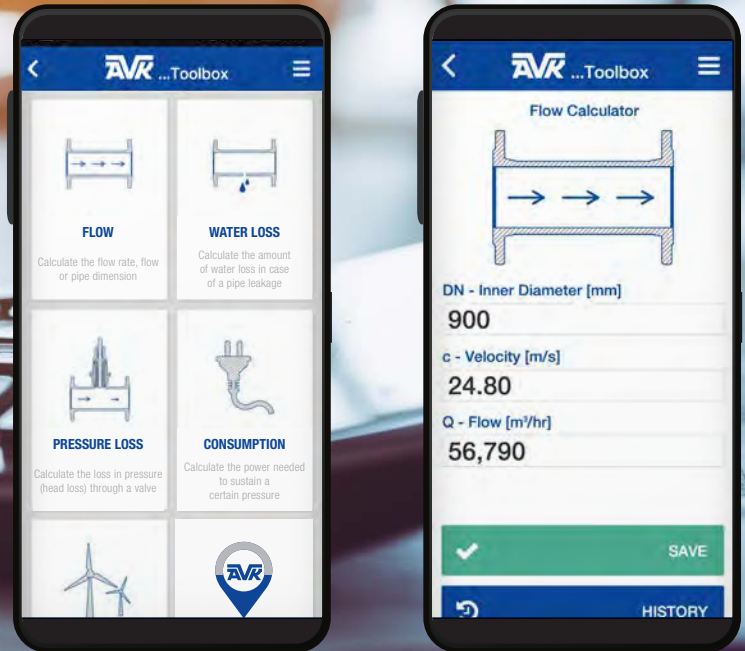
### BIM PROJECT DESIGN

Building Information Management (BIM) is rapidly becoming the primary design methodology in many regions.

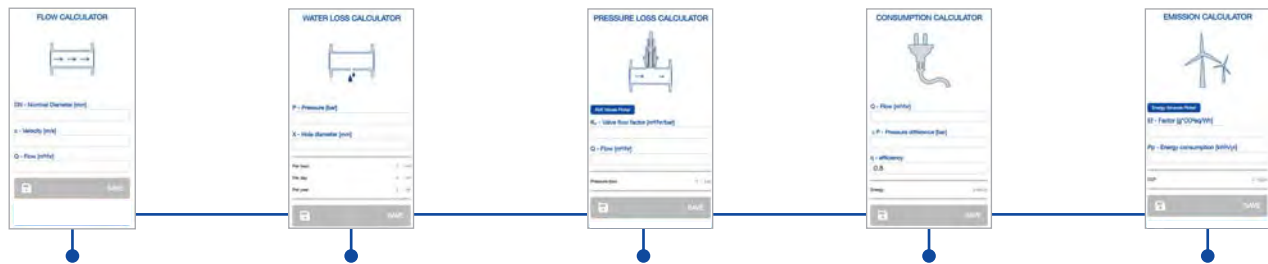
BIM models of AVK products can be accessed via this portal.

This is all immediately available to subscribers of the AVK ASSIST App.

# AVK TOOLBOX



## AVK TOOLBOX SIMPLIFIES YOUR TECHNICAL, ENERGY AND ENVIRONMENTAL CALCULATIONS.



### THE FLOW CALCULATOR

Three variables: DN class, flow velocity and flow rate. Know any two, and the flow calculator will calculate the third for you.

Enter the flow velocity and flow rate and the system provides you with the DN class in a nominal size.

The flow calculator is intelligent. It takes the nominal size and translates it to a standard DN class. You can then adjust the flow velocity and flow rate accordingly.

### THE WATER LOSS CALCULATOR

calculates the amount of water lost as a result of leak. You enter two variables: pressure in the pipe, and the diameter of the hole through which the water is escaping. The water loss calculator will then tell you the volume of water lost per hour, per day and per year if no remedial action is taken.

### THE PRESSURE LOSS CALCULATOR

determines the pressure loss in a valve for a given flow rate.

You only need to enter two values into the pressure loss calculator: the flow rate and valve flow factor (Kv-value). If known, the Kv-value can be entered directly into the calculator. Alternatively, you can use the AVK valve picker to identify the valve you are working with. The AVK valve picker automatically inserts the required Kv-value.

The pressure loss is calculated in bars.

### THE POWER CONSUMPTION CALCULATOR

Input the flow rate, pressure difference, and your pump's efficiency grade (the default is set at 0.8).

The power consumption calculator gives you the power consumption in kWh/yr.

### THE EMISSION CALCULATOR

is calculating the CO<sub>2</sub> emission stemming from the power consumption at a given energy source. The emission calculator needs the input of the power consumption, in the amount of kWh/yr, and the emission factor, in the amount of g\*CO<sub>2</sub>eq/kWh. The emission factor can be typed as an arbitrary value or an energy source can be picked from the app. In the energy source picker nine different energy sources will appear.

# AVK INFO

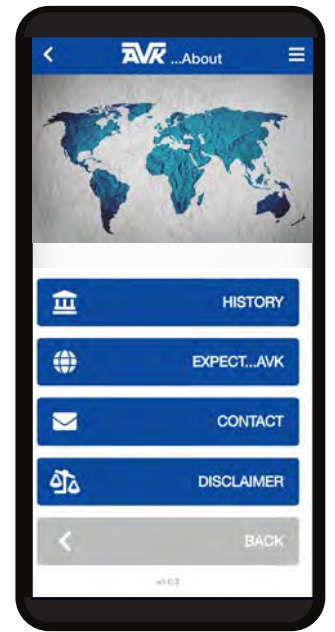


This portal provides an insight into our history, our pedigree and our values. We understand that customers have a high expectation of both the quality of our products and our service delivery.

Our commitment to our customers is encapsulated in our 'Expect...AVK' mission statements.

The portal also provides a global locator of our Global AVK facilities to ensure you can always get hold of us to support you wherever you are on the planet.

AVK Assist is free. It brings together four apps that will help you improve asset specification, mapping and management.



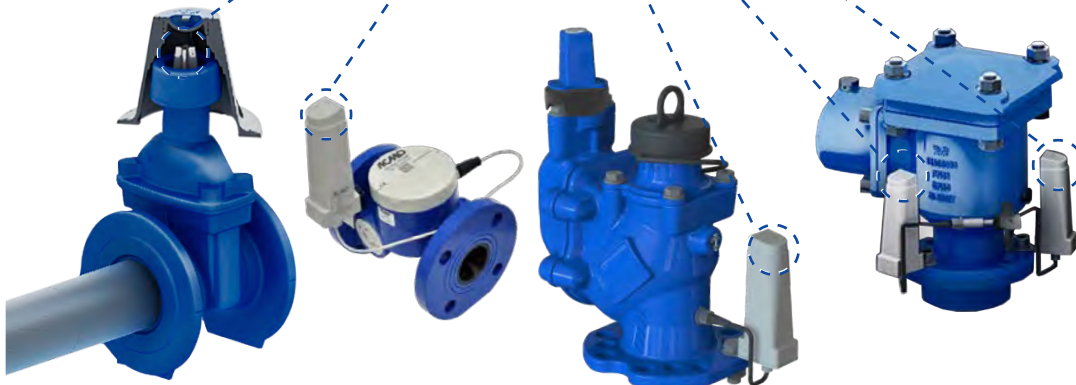
CONTROL ROOM/DEVICES



4G/IP

DATA COLLECTION

LoRa®



## INNOVATION UPDATE - THE FIFTH PORTAL AVK SMART WATER

Water resilience and energy reduction are key elements in all global water strategies. The AVK SMART water programme transforms what had previously been passive assets into generators of intelligent, accurate, real-time data. This data, transmitted over a variety of communications platforms, enables engineers to monitor and optimise the performance of their networks.







# AVK WEBSITE



AVK World Visualisation

## THE AVK WEBSITE

With a completely fresh look and functionality, this new, advanced solution is easier to navigate and information easier to access with increased product visibility, identification and selection.

The updated Product Finder, the principal selection tool, offers greater product information at-a-glance while the new, “AVK World” visualisation is very exciting and a great guide to product selection, application, installation and links to the product represented.





# EMERGENCY FITTINGS SERVICE

BE PREPARED.

***PLACE YOUR STOCK ORDERS NOW.***

**0800 202 8228**

**24/7 EMERGENCY FITTINGS**

Same day leak repair clamp and  
fabricated fitting service for  
**WATER** and **GAS** mains.

**Please have the following information available:**

- Medium: water or gas
- Pipe diameter (callipered).
- Length of clamp in increments of 150mm (6").
- Pipe material (if possible).
- Working pressure of main.
- Extent of ovality (if possible).
- For clamps DN50 to 450 (2" to 18"). Please state single or double band.
- Contact name and number.
- Delivery address and post code.
- An order number and/or ability to send a written order confirmation (electronic, fax, text).

For fittings and other AVK products on standard service offer contact:

**Gas Sales: +44 (0) 1246 479100**

**Water Sales: +44 (0) 1604 601188**

For clamps DN50mm to 1200mm+ (2" to 48")

Please state single or double band.

Range for single band clamps DN50mm to 450mm

Range for multi band clamps DN80mm to 1200mm+



**FOR THE FULL RANGE  
SCAN HERE OR CLICK HERE**





**Northampton Office**

8 Rushmills  
Northampton  
NN4 7YB  
England UK

Tel - +44 (0) 1604 601188  
Email - [customerservice@avkuk.co.uk](mailto:customerservice@avkuk.co.uk)

